



**WEDGEPORT BOATS LTD.**

**MADE TO MEASURE ~ BUILT TO LAST**

*When you're on a Wedgeport Boat  
you're ready for the sea.*



1-888-237-5333 • [wedgeportboats.com](http://wedgeportboats.com)



## WEDGEPORT BOATS LTD.



### OUR TRADITION OF VALUE



Wedgeport Boats Ltd. is in the business of building strong seaworthy vessels. Whether you need a heavy duty commercial work boat or a recreational coastal cruiser, you're making the right decision with Wedgeport Boats Ltd.

Our certified boatbuilders have over 60 years combined experience working with the commercial fishing industry. During that time, our unique approach to boat building has evolved through a recognition that the best value for each vessel we produce results from a boat specially designed to each customer's requirements.

*Robert Leblanc of Wedgeport, NS has built four vessels with us since 1994. His third boat Jessica & Trevor III at 44'11" x 23'0" was the prototype for what has become a very popular model for Wedgeport Boats Ltd.*

***Thanks Robert!***



## MADE TO MEASURE



At Wedgeport Boats, we take the customization of each boat as the normal course of doing business. Our own flexible mould design, combined with our extensive facilities, allow us to adjust both length and breadth of the vessel, fabricate metal products, and incorporate the customized features required.

Our diversified construction facility produces each vessel to each customer's specifications and desired degree of finish. Hulls range in size from 34 to 50 feet and breadths of 14 to 23 feet. Wedgeport Boats has an in-house custom welding shop, two moulding shops, two finishing bays and even a retail marine outlet store. We also have haul out facilities and a storage area. We can accommodate both major and minor repairs and refit for vessels up to 55 feet.

*Warren Apel from New Jersey wanted to obtain a lot of speed with a fairly large boat.*

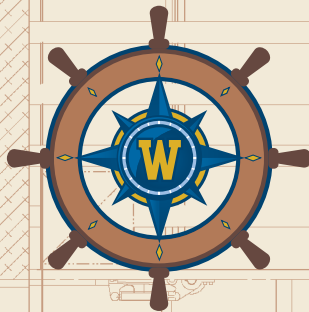
*His boat measured 46'0" x 18'0" and he also added a six foot aluminum ramp on the stern.*

*He obtained over 20 knots with his Detroit Series 60 engine (740hp) and cruised at about 18 knots.*

*Warren's response was simply*

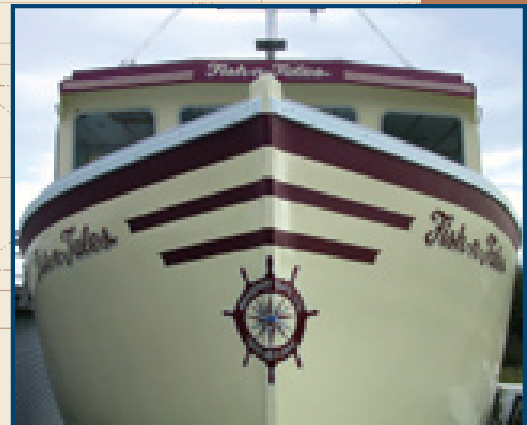
*"I'm happy!"*

Our reputation for unbeatable value is backed by our commitment to customer service. Whether your vessel is built for work or pleasure, whatever your needs for features – from bow to stern – we'll help you find the best products and solutions.



**WEDGEPORT BOATS LTD.**

1-888-237-5333 • [wedgeportboats.com](http://wedgeportboats.com)



## BUILT TO LAST

Wedgeport Boats are known for their durable strength, quality craftsmanship, interior design and versatility, manufactured to meet – and exceed – Transport Canada's Ship Safety Construction Standards and accepted industry standards. Due to our quality control process, you will confidently take possession of your boat one day, and be safely on the water the next.

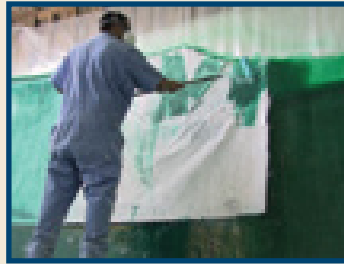
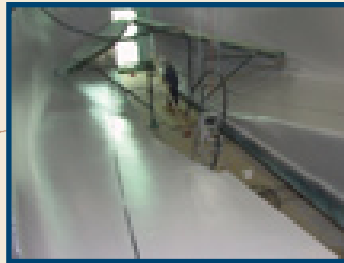
*When you're on a Wedgeport Boat you're ready for the sea.*



*Donny Boudreau, Captain & Owner of M.V. Double Don writes:*

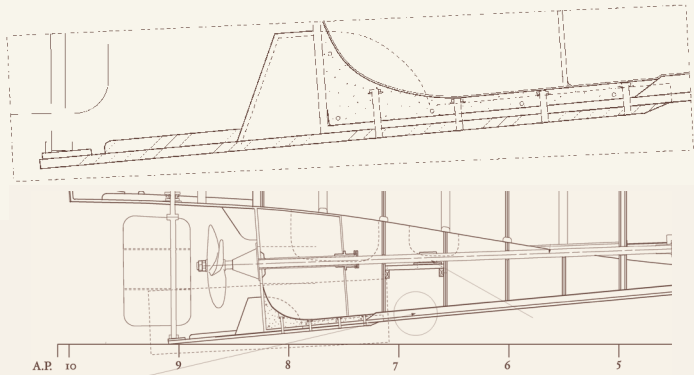
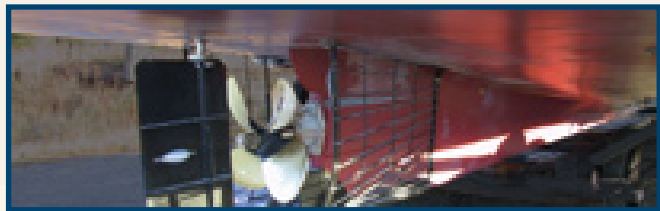
*"I've been fishing for over 20 years, and on many different boats. My new boat is the most stable and best boat design I have ever fished on.*

*I would recommend Wedgeport Boats to anybody."*



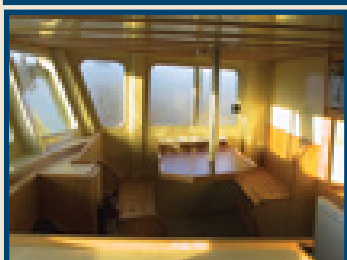
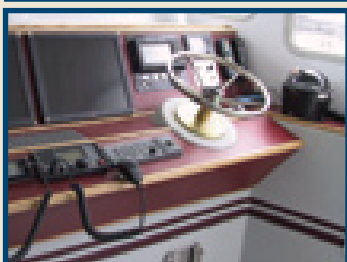
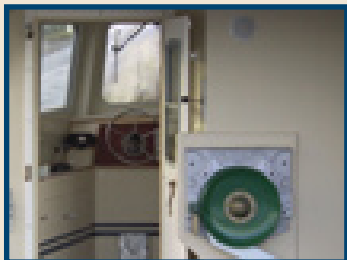
## STAGE 1 MOULDING

- Mould is waxed and prepared
- Tape is applied to create a break line if the hull is to be widened
- Coloured gel coat of choice is applied
- Tape is removed while gel coat is still wet, to make break point for widening of hull
- The skin coat is applied
- If necessary, the hull is altered – one mould serves for many hull sizes
- Fibreglass laminates are applied by hand to meet the required amount depending on the size of hull to be built
- Laminates are rolled out to remove bubbles or voids
- When hull halves are complete with appropriate laminates they are butted together and joined using fibreglass laminates
- Solid beam is embedded from skeg to main bulkhead area and beam is fibreglassed over
- Hull is released from the mould – ***A boat is born!***
- Clean up and cosmetic adjustments are completed



*The Wedgeport Boats Double-Solid Keel ~  
designed for durability*

1-888-237-5333 • [wedgeportboats.com](http://wedgeportboats.com)



## STAGE 2 OUTFITTING & FINISHING

- Hull bottom is sanded and anti-fouling paint applied below waterline
- Bulkheads and framing are put in place and bulkheads are fibreglassed
- Fish hold area is insulated if requested
- Gel coat is applied to completed bulkheads and framing
- Deck beam, carlings and washboards/rails are installed
- Engine beds, fuel and water tanks are constructed
- Hydraulic tanks and other under deck components are installed
- Fuel tanks are secured and venting is prepared prior to deck completion
- Beam and carlings are through bolted and/or drift pinned to each other and to deck shelves
- Hydraulics and fuel lines are installed
- Shaft tunnel is prepared
- Stern post, shaft tunnel and rudder area are measured, sized and prepared
- Shaft holes are cut and stern post is prepared to set cutlass bearing
- Shaft, propeller, rudder and if requested propeller cage or protector are installed
- Engine and hydraulic keel cooling pipes are made and prepared for installation
- Cooling pipes are installed under hull and connected to systems
- Battery banks are completed
- Electrical systems are started
- Hydraulic systems are connected
- Engine components are completed
- Exhaust is installed
- Forward deck and wheelhouse floors are fibreglassed
- Main deck is fibreglassed
- Wheelhouse is constructed using solid plywood and beams or sandwich core
- Wheelhouse is fibreglassed, faired, sanded and gel coated
- Boat name and port of registry are applied
- Exhaust tunnels are completed
- Doors, windows, access ports, vents and safety equipment are installed
- Fishing gear is mounted, based on the preference of the customer
- Electrical wiring and mechanical systems are completed
- Helm and controls are mounted
- Galley and mess are custom built to customer's choice
- Head and/or shower rooms are completed
- Wheelhouse deck head (ceiling) is prepared after running of electrical, and other components are installed
- Boat is removed from shop for completion of mast, booms, "A" frames, etc.
- Engine is prepared for start-up
- All components are filled with fluids and checked for leaks in preparation for sea trials
- Final touch ups and adjustments are done to galley, mess and wheelhouse
- Electronics are completed and readied for trials
- Interior joinery is completed to customer's individual specs
- Final adjustments are made to all components and final check list is reviewed to ensure all systems are ready for sea trials



## STAGE 3 LAUNCH & TRIALS

- Rigging to mast is completed as required
- Engine is started, and all operating systems are checked in preparation for launch
- Our Quality Inspection Program ensures all systems are completely checked – above deck, below deck, and mechanical
- Thorough sea trials are conducted
- Transport Canada Ship Safety Inspector makes final inspection sea trials



## OUR COMMITMENT TO QUALITY

Wedgeport Boats Ltd. is committed to continually improving the quality of the boats we build and the services we provide. Our goal is to deliver quality products and services that meet or exceed our customers' requirements, while always treating customers, suppliers and employees fairly and honestly. When you choose Wedgeport Boats Ltd. you're choosing a company and people dedicated to the boating industry.



Wedgeport Boats are manufactured to meet – and exceed – Transport Canada's Ship Safety Construction Standards and accepted industry standards.



*Promoting quality and standards for Nova Scotia's boatbuilding industry.*

Wedgeport Boats Ltd. is a Gold member of the Nova Scotia Boatbuilders Association and a member of the American Boat & Yacht Council.



*Setting Standards for Safer Boating*



Certified by the Province of Nova Scotia Boatbuilder's Program

Nova Scotia Fisheries Loan Board Approved



We recommend Stright-MacKay Ltd. for all your marine equipment. Visit [stright-mackay.com](http://stright-mackay.com).



## WEDGEPORT BOATS LTD.

23 Doucet Wharf Road  
P.O. Box 406, Lower Wedgeport  
Yarmouth County, NS B0W 2B0  
T. 902 663-2652 F. 902 663-2589  
[info@wedgeportboats.com](mailto:info@wedgeportboats.com)



1-888-237-5333 • [wedgeportboats.com](http://wedgeportboats.com)

